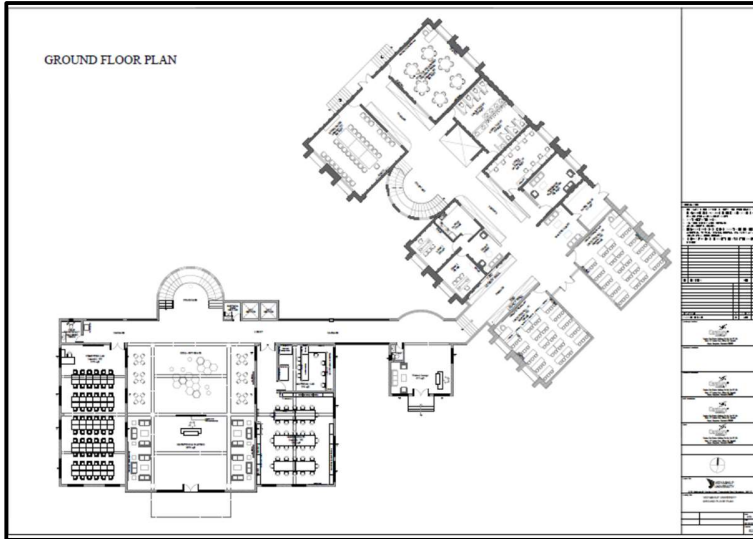


## Physical infrastructure/ other facilities available at the Founding Campus

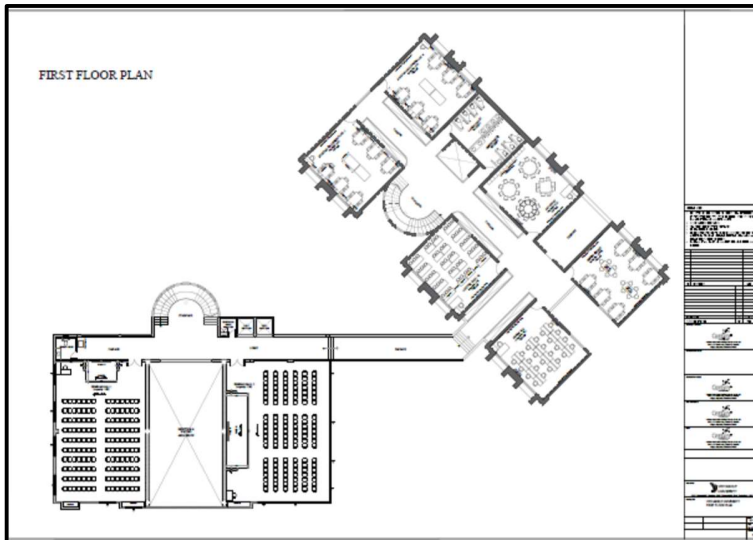
In the first year, the University will have following infrastructure available at its Founding Campus.

### Ground Floor: Instructional Area Details



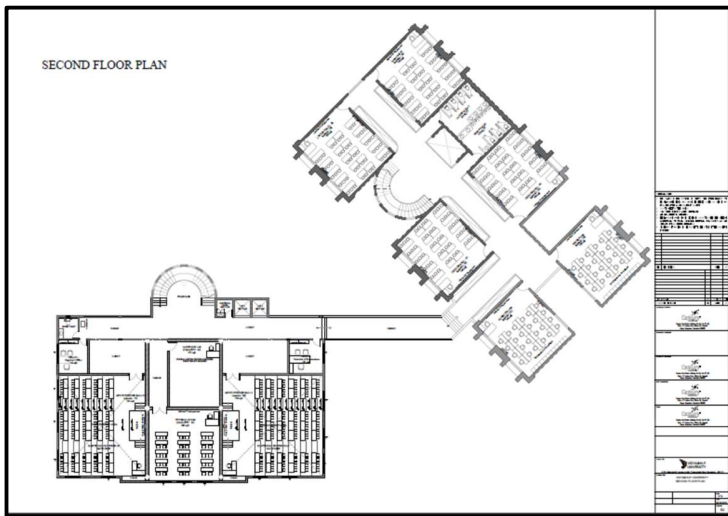
Sl. No.	Details	Area in Sq.ft
1	Lecture Hall 1	760
2	Lecture Hall 2	760
3	Lecture Hall 3	760
4	Board Room	760
5	Makerspace	1605
6	Computer Lab	1370
7	Display Lobby	2870
8	Admission Office	292
9	Administrative Office	368
10	Dean Office	188
11	Infirmary	183
12	Pantry	156
13	Utility Rooms	521
<b>Total</b>		<b>10,493</b>

### First Floor: Instructional Area Details



Sl. No.	Details	Area in Sq.ft
1	Design Lab	760
2	Design Studio	760
3	Art Court	760
4	Lecture Hall 4	760
5	Startup Lab	760
6	Startup Lab	760
7	Seminar Hall	2243
8	Seminar Hall	1980
9	Utility Rooms	565
<b>Total</b>		<b>9,348</b>

### Second Floor: Instructional Area Details



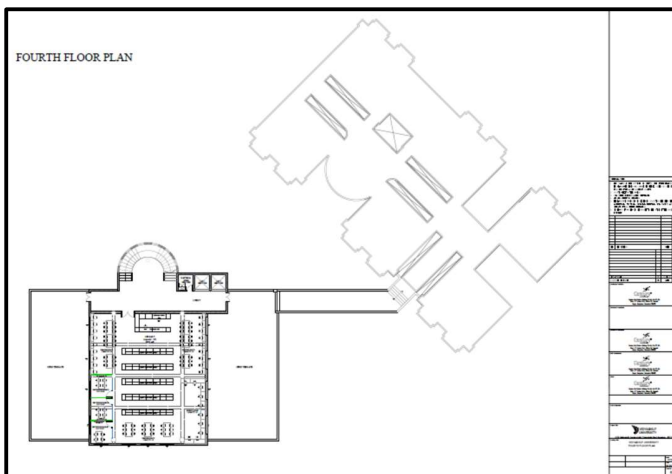
Sl. No.	Details	Area in Sq.ft
1	Laboratory	760
2	Laboratory	760
3	Lecture Hall 5	760
4	Lecture Hall 6	760
5	Lecture Hall 7	760
6	Lecture Hall 8	760
7	Language Lab	557
8	Tutorial Room	840
9	Multi-Purpose Hall 1	2230
10	Multi-Purpose Hall 2	1958
11	Registrar Office	156
12	COE Office	181
13	Utility Rooms	565
<b>Total</b>		<b>11,047</b>

### Third Floor: Instructional Area Details



Sl. No.	Details	Area in Sq.ft
1	Chancellor Office	748
2	Vice Chancellor Office	748
3	Staff Room 1	760
4	Staff Room 2	753
5	Staff Room 3	760
6	Staff Room 4	760
7	Laboratory	1661
8	Office Rooms	968
9	Utility Rooms	565
<b>Total</b>		<b>7,723</b>

### Fourth Floor: Instructional Area Details



Sl. No.	Details	Area in Sq.ft
1	Library & Student Resources	2,842

### Facilities & Area Details

Sl. No.	Facilities	Area in Sq.ft
1	Parking Area	40376
2	Sports Court	24440
3	Amphitheatre	13594
4	Food Court	5218
5	Student Activity Area	5106
6	Student Arrival Park	2003
7	Amphitheatre	1471
8	Security Office	80
<b>Total</b>		<b>92,288</b>



**Amphitheatre Area**  
(Architect's Impression)



**Food Court**  
(Architect's Impression)